



TEST

Test Level-1 (Reproduction)



20 Questions



15 min

Topics

Spermatogenesis, Oogenesis, Menstrual Cycle

[Start Test](#)

14 : 58



1/20



15 min



Hint

Q : Sperms are produced from spermatids through:

A

Mitosis

B

Meiosis I

C

Meiosis II

D

Differentiation

1

2

3

4

5

6

7

14 : 56



2/20



15 min



Hint

Q : Change that occurs during conversion of spermatid into sperm is:

A

Formation of nucleus

B

Formation of tail

C

Storage of food

D

Division through mitosis

1

2

3

4

5

6

7

14 : 54



3/20



15 min



Hint

Q : Number of spermatids produced from one secondary spermatocyte is:

A

1

B

2

C

3

D

4

1

2

3

4

5

6

7

14 : 50



3/20



15 min



Hint

Q : Number of spermatids produced from one secondary spermatocyte is:



1



2



3



4

1

2

3

4

5

6

7

14 : 48



4/20



15 min



Hint

Q : From 10 primary spermatocytes, how many spermatids are produced?

A

10

B

20

C

40

D

80

1

2

3

4

5

6

7

14 : 42



5/20



15 min



Hint

Q : Oogonia are produced by germ line cells of:



A Both uterus and cervix



B Cervix



C Uterus



D Ovary

1

2

3

4

5

6

7

14 : 40



6/20



15 min



Hint

Q : Number of polar bodies produced after meiosis I is:



One



Two



Three



Four

1

2

3

4

5

6

7

14 : 38



7/20



15 min



Hint

Q :

Which of the following fact/s is/are true about menstruation?



It occurs only when the released ovum is not fertilized



It occurs due to the breakdown of endometrial lining



It is characterized by decline in progesterone level



All A, B, C

1

2

3

4

5

6

7

14 : 33



8/20



15 min



Hint

Q : Oogenesis starts during:



Fertilization



Embryonic development



Puberty



Time of birth

7

8

9

10

11

12

13

14 : 31



9/20



15 min



Hint

Q : Phenomenon by which an egg is discharged from the ovary is called:

A

Leutinization

B

Menstruation

C

Ovulation

D

Fertilization

7

8

9

10

11

12

13

14 : 29



10/20



15 min



Hint

Q : ICSH is another name used for:



LH



FSH



Oxytocin



ADH

7

8

9

10

11

12

13

14 : 26



11/20



15 min



Hint

Q : The end or complete stop of the menstrual cycle is called:

A

Estrous

B

Menarche

C

Menopause

D

Andropause

7

8

9

10

11

12

13

14 : 24



12/20



15 min



Hint

Q : Level of LH is maximum in blood during which stage of menstrual cycle?

A

Menstrual

B

Proliferative

C

Ovulation

D

Secretory

7

8

9

10

11

12

13

14 : 22



13/20



15 min



Hint

Q : Follicle cells after ovulation are modified to form:



Primary follicles



Sertoli cells



More ova



Corpus luteum

7

8

9

10

11

12

13

14 : 18



14/20



15 min



Hint

Q : Yellowish glandular structure in ovary secretes a hormone:

A

FSH

B

LH

C

Estrogen

D

Progesterone

14

15

16

17

18

19

20

14 : 16



15/20



15 min



Hint

Q : Menstruation is the result of decrease in level of:



FSH



LH



Estrogen



Progesterone

14

15

16

17

18

19

20

14 : 13



16/20



15 min



Hint

Q : In human females, the periodic reproductive cycle is completed in approximately:

A

20 days

B

28 days

C

280 days

D

380 days

14

15

16

17

18

19

20

14 : 11



17/20



15 min



Hint

Q : The first half of menstrual cycle is:



Secretory phase



Luteal phase



Proliferative phase



Menstruation

14

15

16

17

18

19

20

14 : 09



18/20



15 min



Hint

Q : On an average, menstruation stage lasts for about _____ days:



2



4



14



10

14

15

16

17

18

19

20

14 : 07



19/20



15 min



Hint

Q : Menstrual cycle is controlled by hormones of:



Pituitary



Pancreas



Hypothalamus



Ovary

14

15

16

17

18

19

20

14 : 05



20/20



15 min



Hint

Q : Corpus luteum is formed due to action of:

A

FSH

B

LTH

C

LH

D

STH

14

15

16

17

18

19

20



TEST RESULT

Test Level-1 (Reproduction)



20



15 min

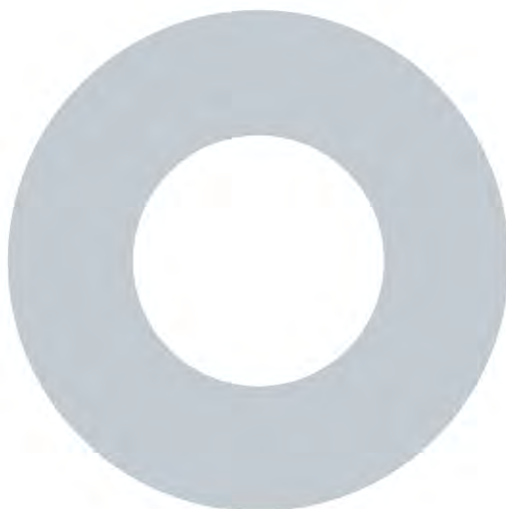


13-Aug-2020



0 sec

Result Detail



	Correct	0
	Incorrect	0
	Unattempted	20



Correct



Unattempted



Incorrect



1/20

Q : Sperms are produced from spermatids through:

A

Mitosis

B

Meiosis I

C

Meiosis II

D

Differentiation

Explanation

The change from spermatid to sperm involves addition of tail.



Correct



Unattempted



Incorrect



2/20

Q : Change that occurs during conversion of spermatid into sperm is:



Formation of nucleus



Formation of tail



Storage of food



Division through mitosis

Explanation

Spermatids are not motile. Spermatozoa have a tail for mobility.



Correct



Unattempted



Incorrect



3/20

Q : Number of spermatids produced from one secondary spermatocyte is:



1



2



3



4

Explanation

Secondary spermatocyte is produced by meiosis I and undergoes second meiotic division to produce spermatids.



Correct



Unattempted



Incorrect



4/20

Q : From 10 primary spermatocytes, how many spermatids are produced?



10



20



40



80

Explanation

Each primary spermatocyte undergoes meiosis I and II to be converted into spermatids. A single form four cells after meiosis.



Correct



Unattempted



Incorrect



5/20

Q : Oogonia are produced by germ line cells of:

A

Both uterus and cervix

B

Cervix

C

Uterus

D

Ovary

Explanation

Oogonia are produced inside female gonads.



Correct



Unattempted



Incorrect



6/20

Q : Number of polar bodies produced after meiosis I is:



One



Two

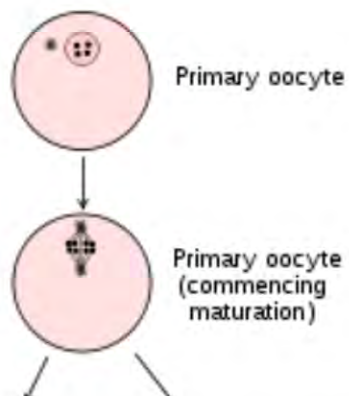


Three



Four

Explanation





Correct



Unattempted



Incorrect



7/20

Q :

Which of the following fact/s is/are true about menstruation?



It occurs only when the released ovum is not fertilized



It occurs due to the breakdown of endometrial lining



It is characterized by decline in progesterone level



All A, B, C

Explanation

In females, menstruation occurs due to the breakdown of the walls of endometrium, which is the result of low progesterone level. It occurs only when the released ovum is not fertilized.



Test Level-1 (Reprod

A

fertilization

B

Embryonic development

C

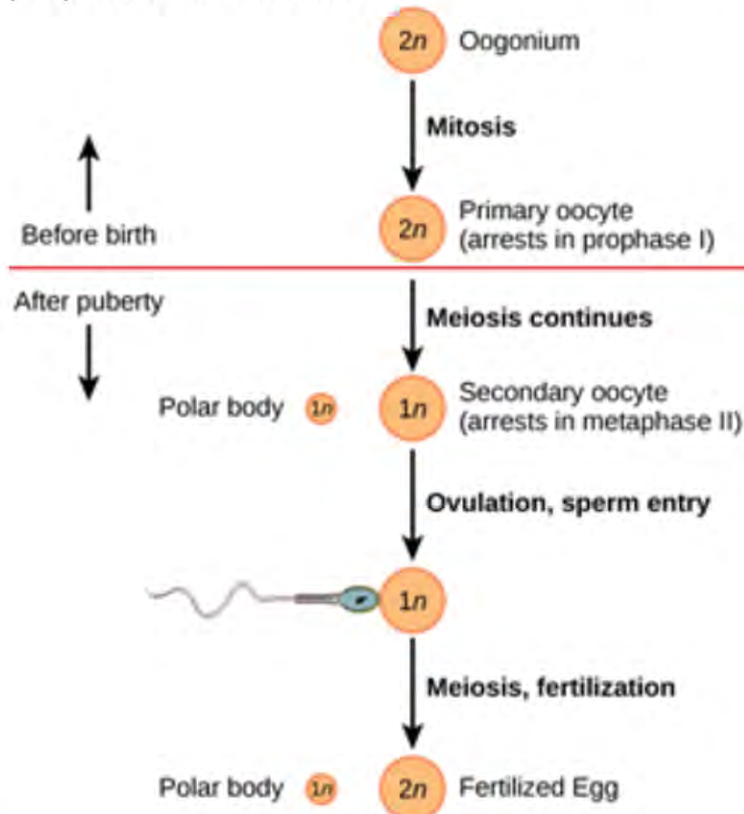
Puberty

D

Time of birth

Explanation

At the time of birth oogonia are arrested in prophase I of meiosis I.





A

Leutinization

B

Menstruation

C

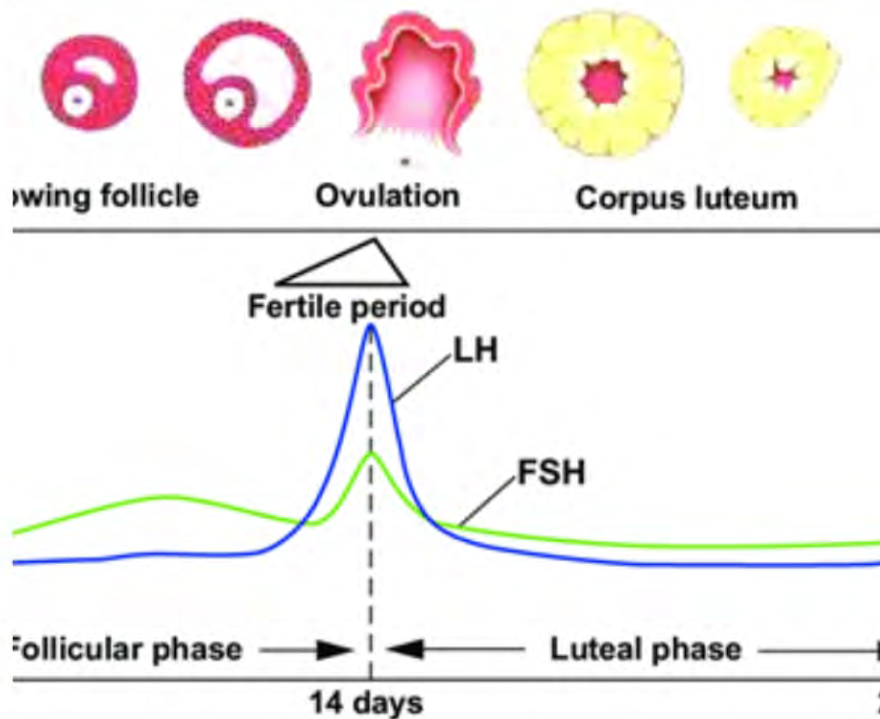
Ovulation

D

Fertilization

Explanation

is charged at the mid of menstrual





Correct



Unattempted



Incorrect



10/20

Q : ICSH is another name used for:



LH



FSH



Oxytocin



ADH

Explanation

FSH and LH are gonadotrophins. LH causes ovulation in females and stimulates the production of testosterone in males.



Correct



Unattempted



Incorrect



11/20

Q : The end or complete stop of the menstrual cycle is called:



Estrous



Menarche



Menopause



Andropause

Explanation

Onset of menstrual cycle is called as menarche.



Test Level-1 (Reprod)

A

Menstrual

B

Proliferative

C

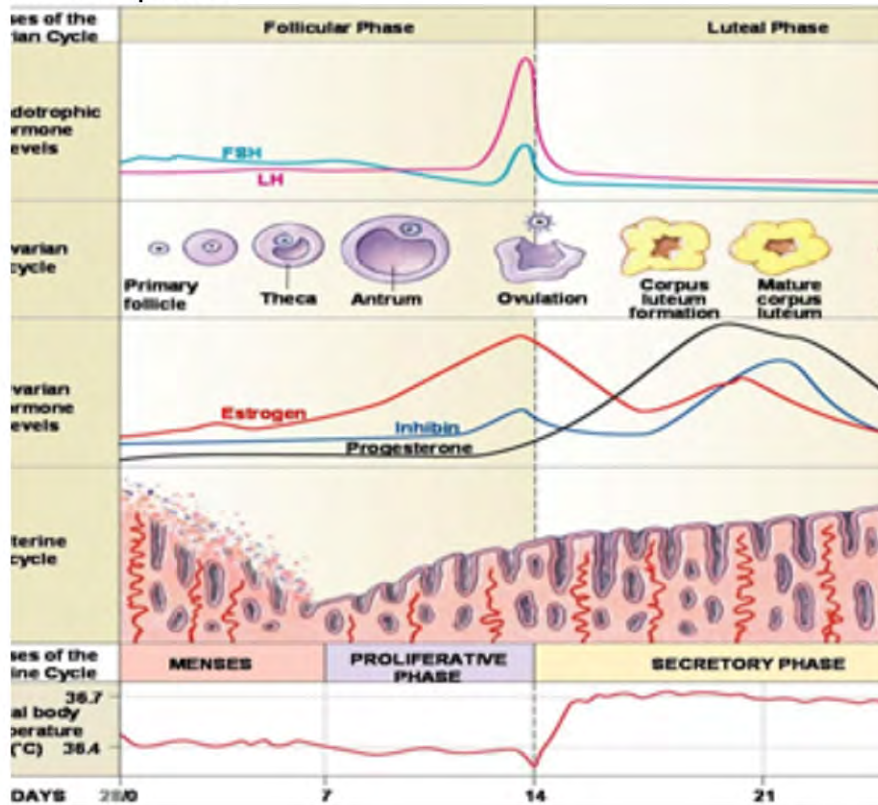
Ovulation

D

Secretory

Explanation

LH of LH reaches to its maximum at the end of proliferative phase.





Correct



Unattempted



Incorrect



13/20

Q : Follicle cells after ovulation are modified to form:

A

Primary follicles

B

Sertoli cells

C

More ova

D

Corpus luteum

Explanation

LH causes rupturing of Graafian follicle which causes the release of ovum.



Correct



Unattempted



Incorrect



14/20

Q : Yellowish glandular structure in ovary secretes a hormone:



FSH



LH



Estrogen



Progesterone

Explanation

Yellowish glandular structure called as corpus luteum is formed by ruptured Graafian follicles.



Correct



Unattempted



Incorrect



15/20

Q : Menstruation is the result of decrease in level of:

A

FSH

B

LH

C

Estrogen

D

Progesterone

Explanation

Menstruation occurs when excessive thickness and vascularization of uterus is shed as a result of corpus luteum degradation.



B

28 days

C

280 days

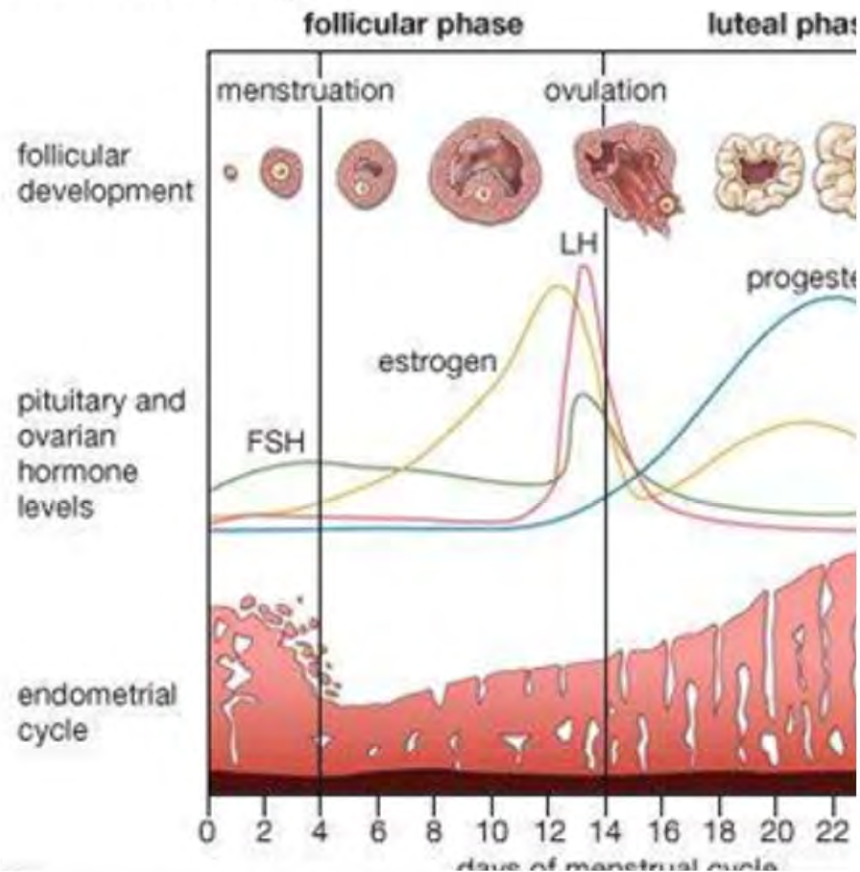
D

380 days

Explanation

In human beings normal duration of menstrual cycle is less than a month with equal duration of post ovulatory and pre ovulatory periods.

The menstrual cycle





Correct



Unattempted



Incorrect



17/20

Q : The first half of menstrual cycle is:

A

Secretory phase

B

Luteal phase

C

Proliferative phase

D

Menstruation

Explanation

Ovulation in menstrual cycle is followed by secretory or luteal phase.



Correct



Unattempted



Incorrect



18/20

Q : On an average, menstruation stage lasts for about _____ days:



2



4



14



10

Explanation

Duration of menstrual cycle ranges from 3 to 7 days.



Correct



Unattempted



Incorrect



18/20

Q : On an average, menstruation stage lasts for about _____ days:



2



4



14



10

Explanation

Duration of menstrual cycle ranges from 3 to 7 days.



Correct



Unattempted



Incorrect



19/20

Q : Menstrual cycle is controlled by hormones of:

A

Pituitary

B

Pancreas

C

Hypothalamus

D

Ovary

Explanation

Regulation of menstrual cycle is done by gonadotrophin hormones.



Correct



Unattempted



Incorrect



20/20

Q : Corpus luteum is formed due to action of:

A

FSH

B

LTH

C

LH

D

STH

Explanation

Corpus luteum is formed from ruptured follicles after ovulation.



TEST

Test Level-2 (Reproduction)



30 Questions



25 min

Topics

Spermatogenesis, Oogenesis, Female Reproductive
Cycle, Menstrual Cycle

[Start Test](#)

24 : 58



1/30



25 min



Hint

Q : Total number of sperms produced from one primary spermatocyte is:



1



2



3



4

1

2

3

4

5

6

7

24 : 55



2/30



25 min



Hint

Q : Which of the following cells are always diploid?

A

Spermatogonia

B

Spermatocyte

C

Spermatid

D

Sperm

1

2

3

4

5

6

7

24 : 53



3/30



25 min



Hint

Q : Spermatogenesis in humans starts _____ and lasts _____.

A

Before birth, at puberty

B

Before puberty, after puberty

C

Before birth, throughout life

D

At puberty, throughout life

1

2

3

4

5

6

7

24 : 50



4/30



25 min



Hint

Q : Conversion of which of the following occurs via meiosis II:

A

Primary oocyte to secondary oocyte

B

Secondary spermatocyte to spermatids

C

Spermatogonia to primary spermatocyte

D

Secondary spermatocyte to spermatozoa

1

2

3

4

5

6

7

24 : 48



5/30



25 min



Hint

Q : Spermatogonia differentiate directly into:



Primary spermatocyte



Secondary spermatocyte



Spermatozoa



Spermatid

1

2

3

4

5

6

7

24 : 46



6/30



25 min



Hint

Q : Androgens stimulates:



Fertilization



Spermatogenesis



Oogenesis



Labour pain

1

2

3

4

5

6

7

24 : 44



6/30



25 min



Hint

Q : Androgens stimulates:



Fertilization



Spermatogenesis



Oogenesis



Labour pain

1

2

3

4

5

6

7

24 : 41



7/30



25 min



Hint

Q : Each spermatogonium is _____ and has _____ number of chromosomes.

A

n, 45

B

2n, 23

C

2n, 46

D

n, 46

1

2

3

4

5

6

7

24 : 36



8/30



25 min



Hint

Q : Second meiotic division in the secondary oocyte is arrested at:

A

Metaphase

B

Prophase

C

Anaphase

D

Telophase

7

8

9

10

11

12

13

14

24 : 33



9/30



25 min



Hint

Q : Which of the following cells are formed in ovary after meiosis I?

A

Secondary oocyte & 2nd polar body

B

Primary oocyte & 1st polar body

C

Secondary oocyte & 1st polar body

D

Ovum & 2nd polar body

24 : 30



10/30



25 min



Hint

Q : Oogonia are produced by germ cells of:



Testes



Cervix



Uterus



Ovary

24 : 27



11/30



25 min



Hint

Q : In human females, meiosis II is not completed until:



Fertilization



Birth



Implantation



Puberty

24 : 26



12/30



25 min



Hint

Q : During estrous cycle, which one causes ovulation in female?

A

Physical mating

B

Estrogen

C

ICSH

D

Conception

7

8

9

10

11

12

13

14

24 : 23



13/30



25 min



Hint

Q : Inner lining of uterus is:



Epimetrium



Myometrium



Endometrium



Perimetrium

24 : 16



14/30



25 min



Hint

Q : Implantation of fertilized egg in the uterus takes place under the influence of:

A

FSH

B

Oxytocin

C

Progesterone

D

LH

24 : 14



15/30



25 min



Hint

Q : Events of menstrual cycle are regulated by:



Pituitary gonadotrophins



Placental gonadotrophins



Chorionic gonadotrophins



Paternal gonadotrophins

24 : 12



16/30



25 min



Hint

Q : At the onset of puberty, FSH stimulates the development of _____ primary follicle/s.

A

1

B

2

C

4

D

Several

24 : 09



17/30



25 min



Hint

Q : All of the following actions are stimulated by estrogen except:

A

Proliferation of endometrium

B

Vascularization of endometrium

C

Secretion of FSH

D

Secretion of LH

24 : 05



18/30



25 min



Hint

Q : Menstrual stage usually lasts for:



1-2 day



3-7 days



10-14 days



24-28 days

24 : 03



19/30



25 min



Hint

Q : Stage of menstrual cycle that starts right after ovulation is:

A

Menstrual

B

Follicular

C

Proliferative

D

Secretory

24 : 00



20/30



25 min



Hint

Q : Coverings of egg when it is released are _____, _____ and _____ from outer to inner.

A

Zona pellucida, corona radiata, cell wall

B

Corona radiata, zona pellucida, membrane

C

Zona pellucida, cell membrane, corona radiata

D

Corona radiata, Zona pellucida, cell membrane

14

15

16

17

18

19

20

23 : 52



21/30



25 min



Hint

Q : Events of the menstrual cycle involve:



Ovaries only



Uterus only



Pituitary only



Both ovaries & uterus

17

18

19

20

21

22

23

23 : 39



22/30



25 min



Hint

Q : Progesterone is secreted by:



A Anterior pituitary



B Posterior pituitary



C Median pituitary



D Ovary

17

18

19

20

21

22

23

23 : 36



23/30



25 min



Hint

Q : Most birth control pills contain:

A

Oestrogen

B

FSH

C

Progesterone

D

All A,B,C

17

18

19

20

21

22

23

23 : 33



24/30



25 min



Hint

Q :

Part of ovary in mammals that acts as an endocrine gland after ovulation is:

A

Graffian follicle

B

Pituitary

C

Corpus luteum

D

Placenta

23 : 31



25/30



25 min



Hint

Q : In a reproductive cycle of 30 days, the day of ovulation will be:



12th day



14th day



16th day



18th day

20

21

22

23

24

25

26

23 : 28



26/30



25 min



Hint

Q : Cell debris in menstrual discharge comes from:



Ovary



Oviduct



Uterus



Vagina

20

21

22

23

24

25

26

23 : 24



27/30



25 min



Hint

Q : Chances of fertilization are maximum:



A During proliferative phase



B At end of menstruation



C At start of secretory phase



D At end of secretory phase

24

25

26

27

28

29

30

23 : 21



28/30



25 min



Hint

Q : The secretory phase in the human menstrual cycle is also called:

A

Follicular phase lasting for about 6 days

B

Luteal phase and lasts for about 14 days

C

Follicular phase and lasts for about 13 days

D

Luteal phase and lasts for about 6 days

24

25

26

27

28

29

30

23 : 19



29/30



25 min



Hint

Q : If fertilization does not occur corpus luteum:

A

Proliferates

B

Regenerates

C

Degenerates

D

Divides

24

25

26

27

28

29

30

23 : 16



30/30



25 min



Hint

Q : Which of the following is correct for spermatogenesis and oogenesis?



A Both are cyclic processes



B Both are continuous processes



C Oogenesis is cyclic, spermatogenesis is continuous



D Oogenesis is continuous, spermatogenesis is cyclic

24

25

26

27

28

29

30



TEST RESULT

Test Level-2 (Reproduction)



30



25 min

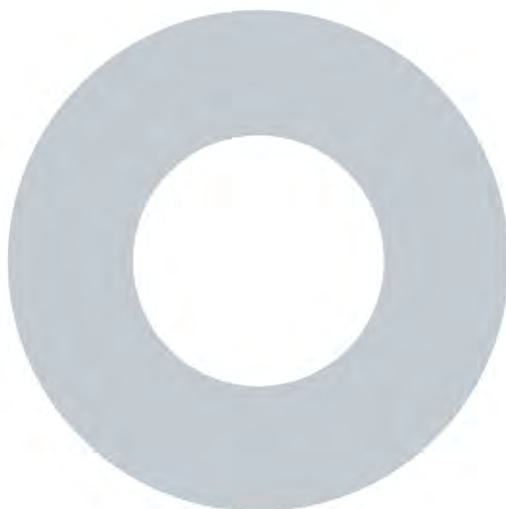


13-Aug-2020



0 sec

Result Detail



	Correct	0
	Incorrect	0
	Unattempted	30



Correct



Unattempted



Incorrect



1/30

Q : Total number of sperms produced from one primary spermatocyte is:



1



2



3



4



Correct



Unattempted



Incorrect



2/30

Q : Which of the following cells are always diploid?

A

Spermatogonia

B

Spermatocyte

C

Spermatid

D

Sperm



Correct



Unattempted



Incorrect



3/30

Q : Spermatogenesis in humans starts _____ and lasts _____.



Before birth, at puberty



Before puberty, after puberty



Before birth, throughout life



At puberty, throughout life



Correct



Unattempted



Incorrect



4/30

Q : Conversion of which of the following occurs via meiosis II:

A

Primary oocyte to secondary oocyte

B

Secondary spermatocyte to spermatids

C

Spermatogonia to primary spermatocyte

D

Secondary spermatocyte to spermatozoa



Correct



Unattempted



Incorrect



5/30

Q : Spermatogonia differentiate directly into:

A

Primary spermatocyte

B

Secondary spermatocyte

C

Spermatozoa

D

Spermatid



Correct



Unattempted



Incorrect



6/30

Q : Androgens stimulates:

A

Fertilization

B

Spermatogenesis

C

Oogenesis

D

Labour pain



Correct



Unattempted



Incorrect



7/30

Q : Each spermatogonium is _____ and has _____ number of chromosomes.



n, 45



2n, 23



2n, 46



n, 46



Correct



Unattempted



Incorrect



8/30

Q : Second meiotic division in the secondary oocyte is arrested at:



Metaphase



Prophase



Anaphase



Telophase



Correct



Unattempted



Incorrect



9/30

Q : Which of the following cells are formed in ovary after meiosis I?

A

Secondary oocyte & 2nd polar body

B

Primary oocyte & 1st polar body

C

Secondary oocyte & 1st polar body

D

Ovum & 2nd polar body



Correct



Unattempted



Incorrect



10/30

Q : Oogonia are produced by germ cells of:

A

Testes

B

Cervix

C

Uterus

D

Ovary



Correct



Unattempted



Incorrect



11/30

Q : In human females, meiosis II is not completed until:

A

Fertilization

B

Birth

C

Implantation

D

Puberty



Correct



Unattempted



Incorrect



12/30

Q : During estrous cycle, which one causes ovulation in female?



Physical mating



Estrogen



ICSH



Conception



Correct



Unattempted



Incorrect



13/30

Q : Inner lining of uterus is:

A

Epimetrium

B

Myometrium

C

Endometrium

D

Perimetrium



Correct



Unattempted



Incorrect



14/30

Q : Implantation of fertilized egg in the uterus takes place under the influence of:



FSH



Oxytocin



Progesterone



LH



Correct



Unattempted



Incorrect



15/30

Q : Events of menstrual cycle are regulated by:

A

Pituitary gonadotrophins

B

Placental gonadotrophins

C

Chorionic gonadotrophins

D

Paternal gonadotrophins



Correct



Unattempted



Incorrect



16/30

Q : At the onset of puberty, FSH stimulates the development of _____ primary follicle/s.



1



2



4



Several



Correct



Unattempted



Incorrect



17/30

Q : All of the following actions are stimulated by estrogen except:



Proliferation of endometrium



Vascularization of endometrium



Secretion of FSH



Secretion of LH



Correct



Unattempted



Incorrect



18/30

Q : Menstrual stage usually lasts for:



1-2 day



3-7 days



10-14 days



24-28 days



Correct



Unattempted



Incorrect



19/30

Q : Stage of menstrual cycle that starts right after ovulation is:



Menstrual



Follicular



Proliferative



Secretory



Correct



Unattempted



Incorrect



20/30

Q : Coverings of egg when it is released are _____, _____ and _____ from outer to inner.

A

Zona pellucida, corona radiata, cell wall

B

Corona radiata, zona pellucida, membrane

C

Zona pellucida, cell membrane, corona radiata

D

Corona radiata, Zona pellucida, cell membrane



Correct



Unattempted



Incorrect



21/30

Q : Events of the menstrual cycle involve:



Ovaries only



Uterus only



Pituitary only



Both ovaries & uterus



Correct



Unattempted



Incorrect



22/30

Q : Progesterone is secreted by:

A

Anterior pituitary

B

Posterior pituitary

C

Median pituitary

D

Ovary



Correct



Unattempted



Incorrect



23/30

Q : Most birth control pills contain:

A

Oestrogen

B

FSH

C

Progesterone

D

All A,B,C



Correct



Unattempted



Incorrect



24/30

Q :

Part of ovary in mammals that acts as an endocrine gland after ovulation is:

A

Graffian follicle

B

Pituitary

C

Corpus luteum

D

Placenta



Correct



Unattempted



Incorrect



25/30

Q : In a reproductive cycle of 30 days, the day of ovulation will be:



12th day



14th day



16th day



18th day



Correct



Unattempted



Incorrect



26/30

Q : Cell debris in menstrual discharge comes from:

A

Ovary

B

Oviduct

C

Uterus

D

Vagina



Correct



Unattempted



Incorrect



27/30

Q : Chances of fertilization are maximum:

A

During proliferative phase

B

At end of menstruation

C

At start of secretory phase

D

At end of secretory phase



Correct



Unattempted



Incorrect



28/30

Q : The secretory phase in the human menstrual cycle is also called:

A

Follicular phase lasting for about 6 days

B

Luteal phase and lasts for about 14 days

C

Follicular phase and lasts for about 13 days

D

Luteal phase and lasts for about 6 days



Correct



Unattempted



Incorrect



29/30

Q : If fertilization does not occur corpus luteum:

A

Proliferates

B

Regenerates

C

Degenerates

D

Divides



Correct



Unattempted



Incorrect



30/30

Q : Which of the following is correct for spermatogenesis and oogenesis?

A

Both are cyclic processes

B

Both are continuous processes

C

Oogenesis is cyclic, spermatogenesis is continuous

D

Oogenesis is continuous, spermatogenesis is cyclic