

TEST UNIT-0



20 Questions



15 min

Topics

Mechanical and Chemical digestion in Oral Cavity, Food in Stomach, Food in Small Intestine & its Functions, Disorders Related to Digestive System and Food Habits, Introduction, Macronutrients and Micronutrients, Special Mode of Nutrition in Plants, Role of Stomata in Gaseous Exchange and Transpiration, Large Intestine - Digestion, Propulsion, Structure, Liver, Pancreas, Relation of Bile and Pancreatic Juice With The Secretin Hormone, Swallowing Process, Peristalsis, Structure of Stomach, Mechanism of Secretion of Gastric Juice, Digestive Function of Duodenum, Jejunum and Ileum, Ulcer, Obesity

[Start Quiz](#)



1/20



15 min



Hint

Q : Lime raises the pH of acidic soil up to:

A

2.00

B

3.00

C

4.00

D

6.00

1

2

3

4

5

6

7



2/20



15 min



Hint

Q : About 90% of transpiration occurs through:

A

Stomata

B

Lenticels

C

Cuticle

D

Root hair

1

2

3

4

5

6

7



3/20



15 min



Hint

Q : Swallowing is initiated by:

A

Epiglottis

B

Soft palate

C

Tongue

D

Larynx

1

2

3

4

5

6

7



4/20



15 min



Hint

Q : Ebner's gland produces:

A

Salivary amylase

B

Saliva

C

Lipase

D

Protease

1

2

3

4

5

6

7



5/20



15 min



Hint

Q : Epiglottis automatically covers the opening of the larynx during the act of:

A

Inspiration

B

Expiration

C

Swallowing

D

All of these

1

2

3

4

5

6

7



6/20



15 min



Hint

Q : Which types of muscles are involved in peristalsis?

A

Skeletal

B

Somatic

C

Smooth

D

Cardiac

1

2

3

4

5

6

7



7/20



15 min



Hint

Q : Normally an empty stomach has storage volume upto:

A

1 liter

B

50 ml

C

4 liters

D

500 ml



8/20



15 min



Hint

Q : Cardiac sphincter prevents transfer of food from:

A

Esophagus to stomach

B

Stomach to esophagus

C

Stomach to duodenum

D

Duodenum to stomach



9/20



15 min



Hint

Q : More the amount of _____ in food more is the production of gastrin:

A

Water

B

Proteins

C

Lipids

D

Carbohydrates



10/20



15 min



Hint

Q : Which is a common site for the digestion of proteins, lipids and carbohydrates?

A

Oral cavity

B

Small intestine

C

Stomach

D

Large intestine



11/20



15 min



Hint

Q : Arrange the segments of the colon in the sequence through which undigested material passes prior to defecation:

- (1) Rectum
- (2) Transverse colon
- (3) Descending colon
- (4) Ascending colon



4, 3, 2, 1



1, 2, 3, 4



2, 1, 3, 4



4, 2, 3, 1



12/20



15 min



Hint

Q : Bile salts are involved in _____ of fats:

A

Hydrolysis

B

Emulsification

C

Hydration

D

Dehydration

9

10

11

12

13

14

15



13/20



15 min



Hint

Q : Chymotrypsin is protein digesting enzyme secreted by:

A

Stomach

B

Duodenum

C

Liver

D

Pancreas



14/20



15 min



Hint

Q : Secretion of secretin is inhibited when pH is:

A

Low

B

High

C

Moderate

D

Neutral

9

10

11

12

13

14

15



15/20



15 min



Hint

Q : Most of peptic ulcers in human beings are caused by:

A

Spicy food

B

Excessive intake of coffee

C

H. pylori

D

Virus



16/20



15 min



Hint

Q : In obesity, the surplus food is stored in:

A

Stomach

B

Large intestine

C

Fat tissue

D

Adipose tissue



17/20



15 min



Hint

Q : Plants are constantly undergoing the process of growth and development which is regulated by:

A

Hormones

B

Enzymes

C

Cytokines

D

Climate



18/20



15 min



Hint

Q : The actual method of insect decomposition involves _____ produced by the plants and bacterial decay within the trap.

A

Nectar

B

Hormones

C

Respiratory arrest

D

Digestive enzymes



19/20



15 min



Hint

Q : Chyme from the stomach is propelled through the small intestine by:

A

Anti-peristalsis

B

Peristalsis

C

Hunger contractions

D

Vomit

14

15

16

17

18

19

20



20/20



15 min



Hint

Q : All of the following are the major food poisoning agents except:

A

E. coli

B

Salmonella

C

Compylobacter

D

Pneumococci



QUIZ RESULT

Test Unit-6



20



15 min



22-Oct-2020



0 sec



0/20



0.0%

[Result Detail](#)



Correct



Unattempted



Incorrect



1/20

Q : Lime raises the pH of acidic soil up to:

A

2.00

B

3.00

C

4.00

D

6.00

Explanation

Lime raises the pH of acidic soil close to neutral pH.

1

2

3

4

5

6

7



Correct



Unattempted



Incorrect



2/20

Q : About 90% of transpiration occurs through:



Stomata



Lenticels



Cuticle



Root hair

Explanation

Most of the transpiration in plants takes place via the pores in leaves.

1

2

3

4

5

6

7



Correct



Unattempted



Incorrect



3/20

Q : Swallowing is initiated by:

A

Epiglottis

B

Soft palate

C

Tongue

D

Larynx

Explanation

Start of swallowing is voluntary. It starts with upward movement of tongue which is a voluntary act.

1

2

3

4

5

6

7



Correct



Unattempted



Incorrect



4/20

Q : Ebner's gland produces:

A

Salivary amylase

B

Saliva

C

Lipase

D

Protease

Explanation

Ebner's gland is located at the dorsal surface of the tongue. It secretes enzyme beginning the process of lipid hydrolysis in mouth.

1

2

3

4

5

6

7



Correct



Unattempted



Incorrect



5/20

Q : Epiglottis automatically covers the opening of the larynx during the act of:

A

Inspiration

B

Expiration

C

Swallowing

D

All of these

Explanation

Glottis remains open during inspiration and expiration.

1

2

3

4

5

6

7



Correct



Unattempted



Incorrect



6/20

Q : Which types of muscles are involved in peristalsis?

A

Skeletal

B

Somatic

C

Smooth

D

Cardiac

Explanation

Peristalsis are automatic wave like contractions of circular and longitudinal smooth muscles.

1

2

3

4

5

6

7



Correct



Unattempted



Incorrect



7/20

Q : Normally an empty stomach has storage volume upto:

A

1 liter

B

50 ml

C

4 liters

D

500 ml

Explanation

Major function of stomach is storage which makes discontinuous feeding possible.

1

2

3

4

5

6

7



Correct



Unattempted



Incorrect



8/20

Q : Cardiac sphincter prevents transfer of food from:

A

Esophagus to stomach

B

Stomach to esophagus

C

Stomach to duodenum

D

Duodenum to stomach

Explanation

Cardiac sphincter is present between stomach and oesophagus. Thus it prevents backward movement of food from stomach to oesophagus.



Correct



Unattempted



Incorrect



9/20

Q : More the amount of _____ in food more is the production of gastrin:

A

Water

B

Proteins

C

Lipids

D

Carbohydrates

Explanation

Gastrin stimulate the production of gastric juice which contains pepsinogen, HCl and mucus.

6

7

8

9

10

11

12



Correct



Unattempted



Incorrect



10/20

Q : Which is a common site for the digestion of proteins, lipids and carbohydrates?



Oral cavity



Small intestine



Stomach



Large intestine

Explanation

At small intestine, secretions/enzymes for digestion of all components fo food are available.



Correct



Unattempted



Incorrect



11/20

Q : Arrange the segments of the colon in the sequence through which undigested material passes prior to defecation:

- (1) Rectum
- (2) Transverse colon
- (3) Descending colon
- (4) Ascending colon

A

4, 3, 2, 1

B

1, 2, 3, 4

C

2, 1, 3, 4

D

4, 2, 3, 1

Explanation

6

7

8

9

10

11

12

- (2) Transverse colon
- (3) Descending colon
- (4) Ascending colon

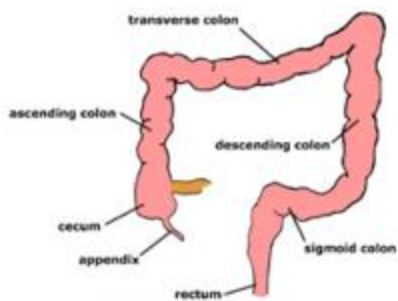
A 4, 3, 2, 1

B 1, 2, 3, 4

C 2, 1, 3, 4

D 4, 2, 3, 1

Explanation





Correct



Unattempted



Incorrect



12/20

Q : Bile salts are involved in _____ of fats:

A

Hydrolysis

B

Emulsification

C

Hydration

D

Dehydration

Explanation

Bile salts convert large insoluble fat particles into small soluble fat globules.



Correct



Unattempted



Incorrect



13/20

Q : Chymotrypsin is protein digesting enzyme secreted by:

A

Stomach

B

Duodenum

C

Liver

D

Pancreas

Explanation

Chymotrypsin is secreted in inactive form called chymotrypsinogen from pancreas.



Correct



Unattempted



Incorrect



14/20

Q : Secretion of secretin is inhibited when pH is:



Low



High



Moderate



Neutral

Explanation

Secretin release when duodenum come in contact with acidic chyme.



Correct



Unattempted



Incorrect



15/20

Q : Most of peptic ulcers in human beings are caused by:

A

Spicy food

B

Excessive intake of coffee

C

H. pylori

D

Virus

Explanation

Bacteria weakens stomach defenses by thinning the mucous coating of the stomach, making it more susceptible to the damaging effects of acid and pepsin.



Correct



Unattempted



Incorrect



16/20

Q : In obesity, the surplus food is stored in:

A

Stomach

B

Large intestine

C

Fat tissue

D

Adipose tissue

Explanation

Adipose tissue is deposited in abdomen and below skin.



Correct



Unattempted



Incorrect



17/20

Q : Plants are constantly undergoing the process of growth and development which is regulated by:



Hormones



Enzymes



Cytokines



Climate

Explanation

Plants are constantly undergoing the process of growth and development which is regulated by the specialized tissues and hormones.

 Correct


 Unattempted

 Incorrect

 18/20

Q : The actual method of insect decomposition involves _____ produced by the plants and bacterial decay within the trap.

 A Nectar

 B Hormones

 C Respiratory arrest

 D Digestive enzymes

Explanation

The actual method of insect decomposition involves digestive enzymes produced by the plants and bacterial decay within the trap.



Correct



Unattempted



Incorrect



19/20

Q : Chyme from the stomach is propelled through the small intestine by:

A

Anti-peristalsis

B

Peristalsis

C

Hunger contractions

D

Vomit

Explanation

Chyme from the stomach is propelled through the small intestine by peristalsis.



Correct



Unattempted



Incorrect



20/20

Q : All of the following are the major food poisoning agents except:

A

E. coli

B

Salmonella

C

Compylobacter

D

Pneumococci

Explanation

The major food poisoning agents includes *E. coli*, *Salmonella* and *Compylobacter*.